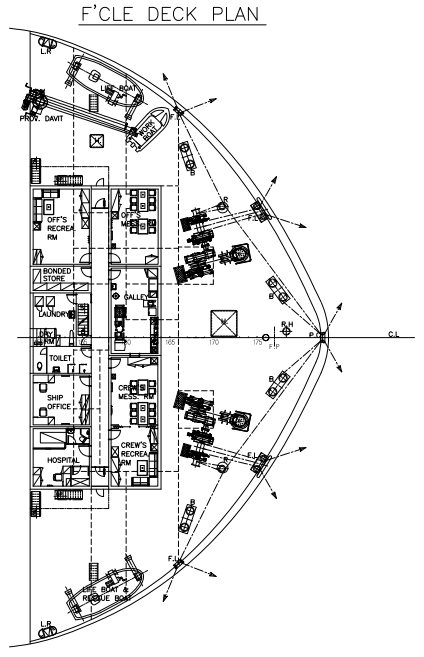
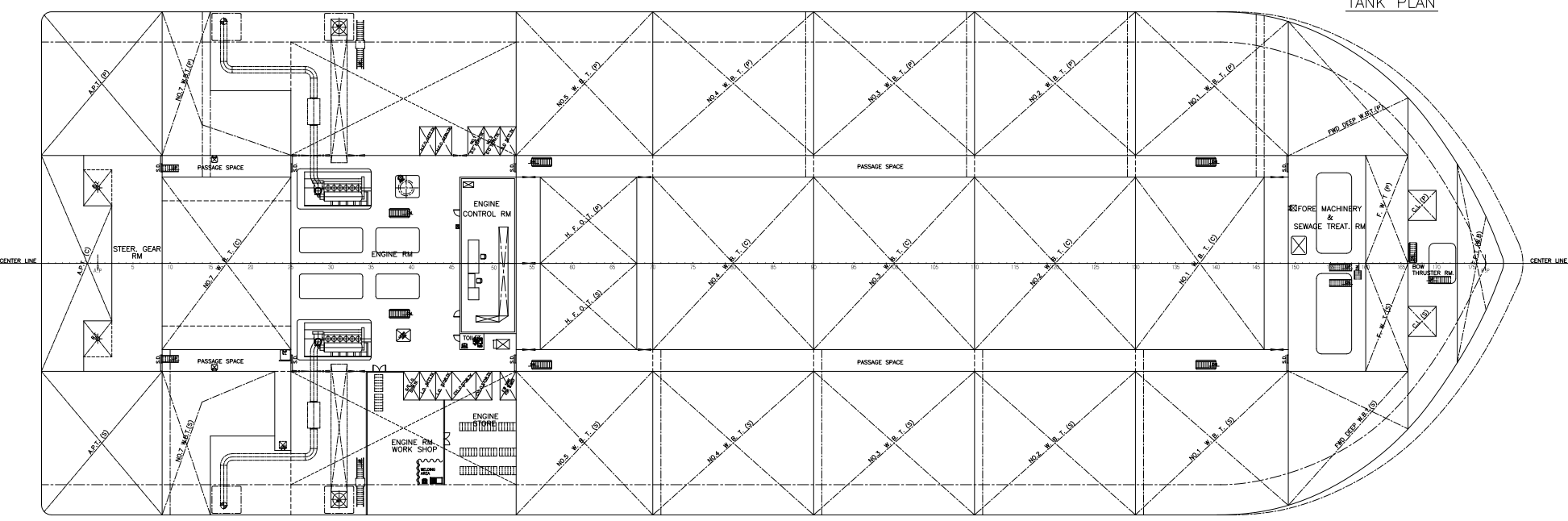
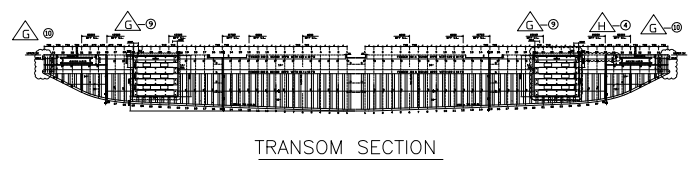
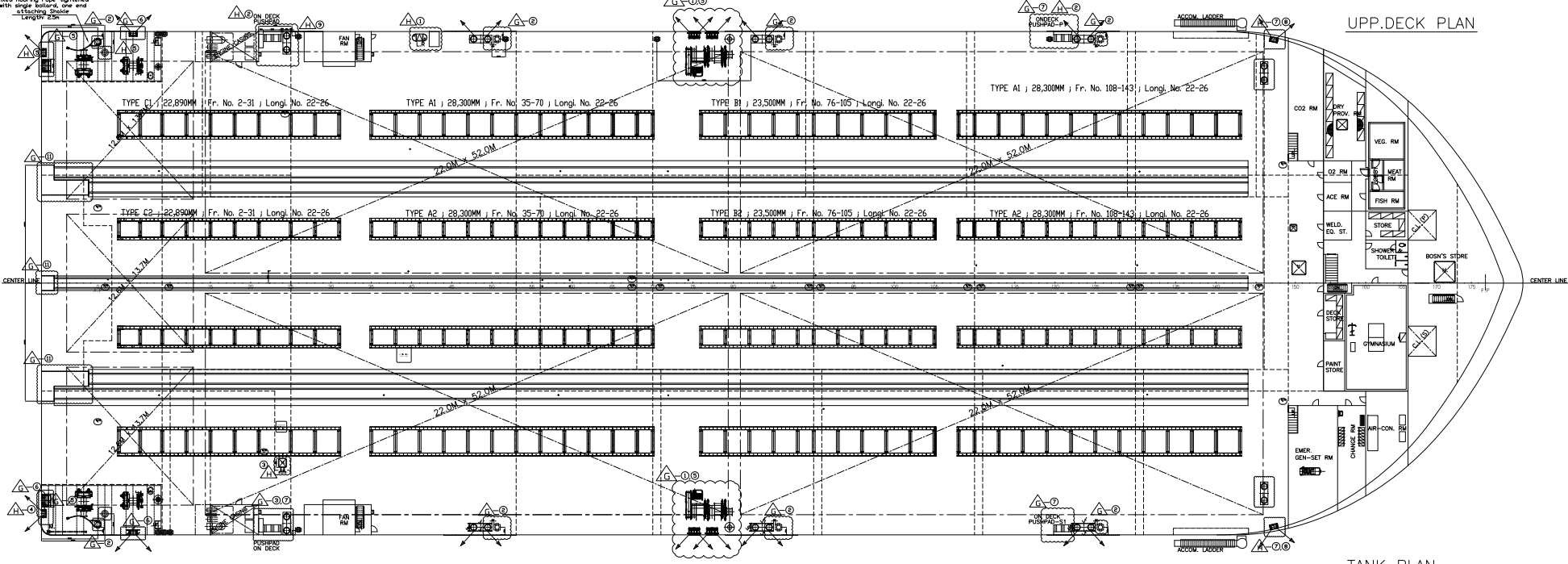
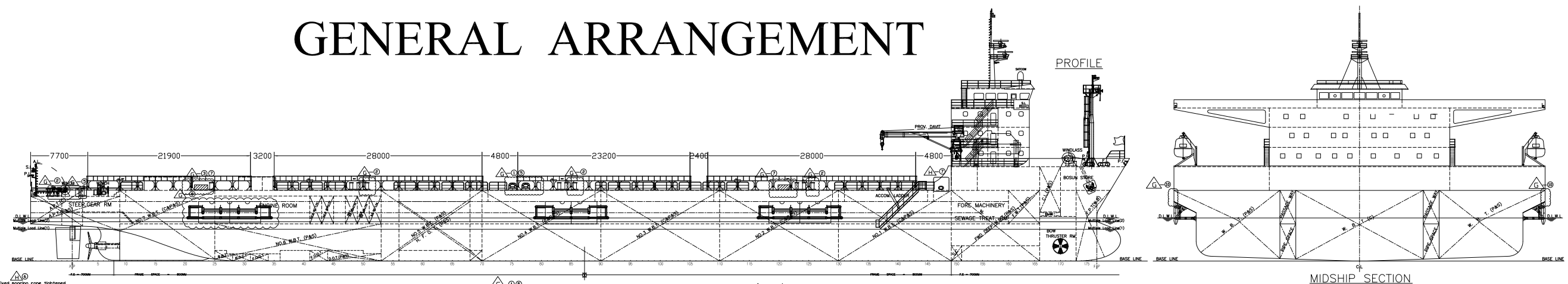


GENERAL ARRANGEMENT

BIBLIOGRAPHY			
REV. NO.	DATE	DESCRIPTION	REMARKS
2008.12.		FINAL DRAWING.	
2018.07.20		1. MID. WINDHOLE INSTALLATION 2. SINGLE BOLLARD(SEA) INSTALLATION (FR. 2, 52, 67, 127) 3. DOUBLE BOLLARD(SEA) RELOCATION (FROM FR. 2 TO FR. 23) 4. LIFE RAFT(SEA) RELOCATION (FROM FR. 23 TO FR. 38) 5. STAND ROLLER(SEA) INSTALLATION (FR. 1, 79+45mm) 6. UNIVERSAL ROLLER & PANAMA CHECK CHANGE (CAPA. 60 -> 100TON) 7. CHECK PUSH PAD(SEA) INSTALLATION (FR. 25, 110) 8. SIDE PUSH PAD(SEA) RELOCATION 9. TRANSOM RUBBER FENDER(SEA) INSTALLATION 10. SIDE HALF ROUND BAR REMOVAL 11. SLURRY DECK FOR HONG-CHENG, NING-60	PORT & STBD PORT & STBD PORT & STBD PORT & STBD PORT & STBD PORT & STBD PORT & STBD PORT & STBD PORT & STBD PORT & STBD
2018.09.02		1. LIFE RAFT AND LADDER RELOCATE FROM FR. 26 TO FR. 37 2. ON DECK PUSH PAD PLAN UPDATED (LENGTH 1.8M) 3. E/R ESCAPE TRAIL (000000) DOWN NOTATED 180 DEGREE 4. TRANSOM STARBOARD SIDE HALF ROUND BAR REMOVAL (L-10) 5. 1. UNIVERSAL ROLLER CHANGED WITH PANAMA CHECK, 1 STAND ROLLER (INSTEAD OF 2) FROM REV. 5, ONLY IN PORT SIDE 6. 2. 5M LONG WORKING ROPE TO BE FIXED WITH SINGLE BOLLARD 7. CHECK RELOCATION (FROM FR. 5 TO FR. 145) 8. DOUBLE BOLLARD RELOCATION (FROM FR. 4 TO FR. 145) 9. HAND RAIL REMOVAL - FR. 26 (PREVIOUS LADDER LOCATION)	PORT PORT & STBD STBD PORT & STBD PORT & STBD PORT & STBD PORT & STBD PORT & STBD PORT & STBD PORT



PRINCIPAL PARTICULARS		
LENGTH O. A.	abt.	148.00M
LENGTH B. P.		138.00M
BREADTH (MAX)		50.00M
BREADTH (MLD)		44.00M
DEPTH (MLD)		9.50M
DRAFT (D.L.W.L)		5.80M
MAIN ENGINE	STX 3,900kWx2SETS	
SPEED (85%MCR W/15% S.M.)	abt.	12.0 KNOTS
COMPLEMENT		18 P.

OWNER :	MEGA LINE CO., LTD.	HULL NO.	H1001
APP. BY	JEFFREY	IMO NO.	9520352
DESIGNER	INTEREX MEGA LINE CO., LTD.	SUBJECT : SHI BLOCK TRANSPORTATION (MEGA TRUST)	
GENERAL ARRANGEMENT			
DATE	SCALE	DATE	REV. NO.
2018.09.02	1/250	2018.09.02	8-002