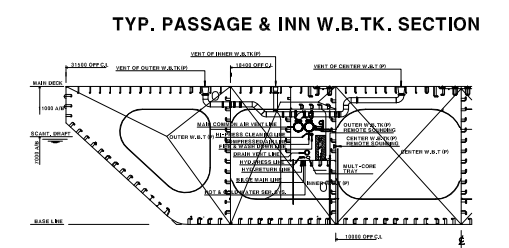
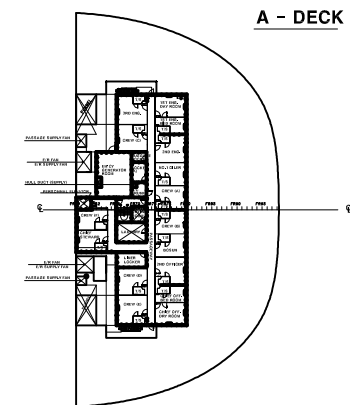
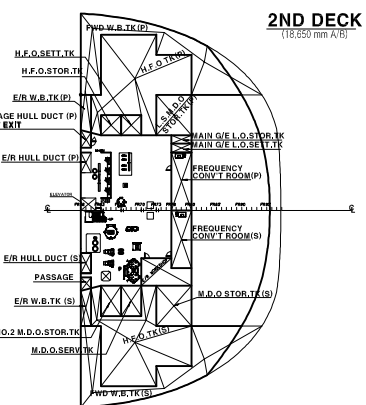
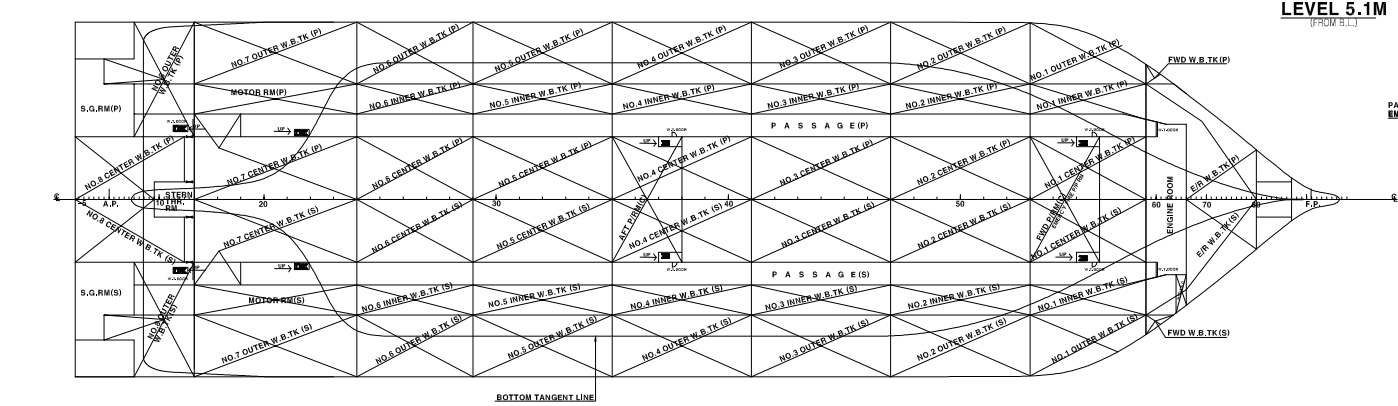
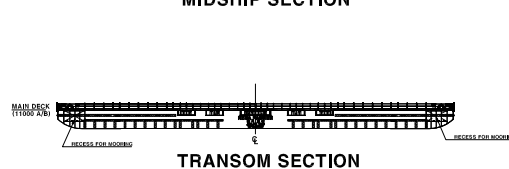
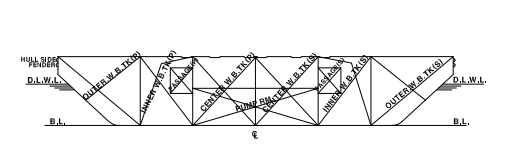
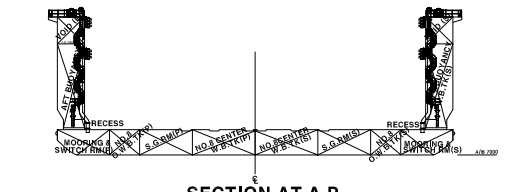
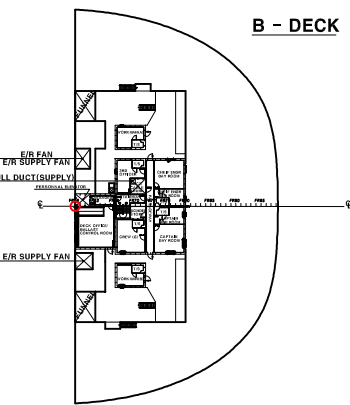
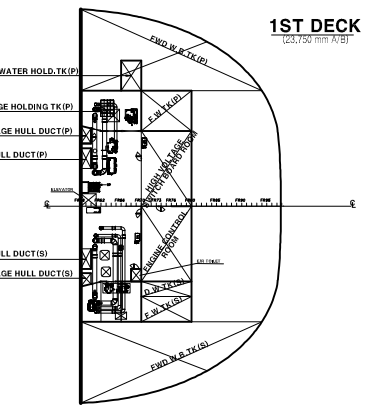
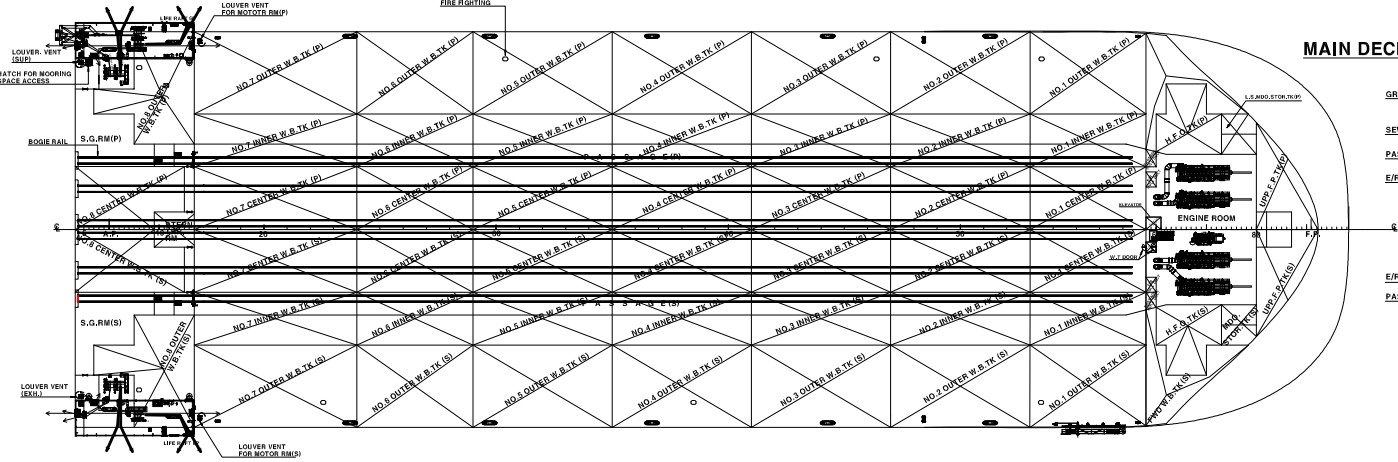
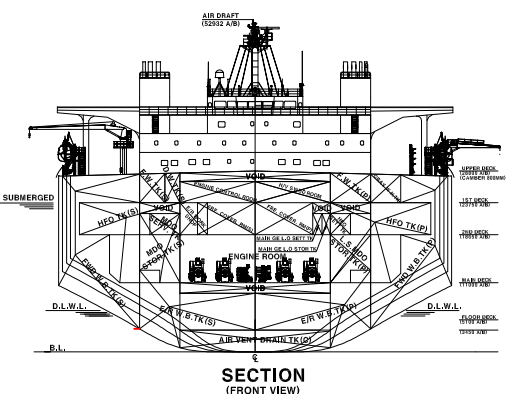
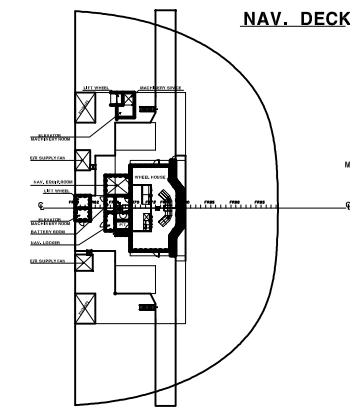
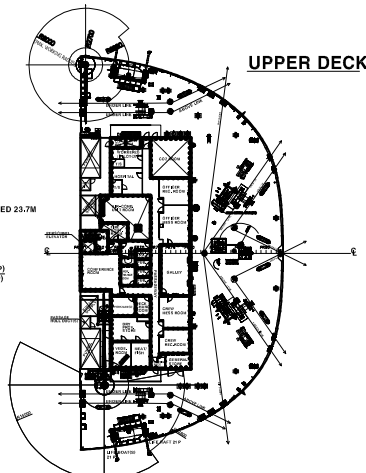
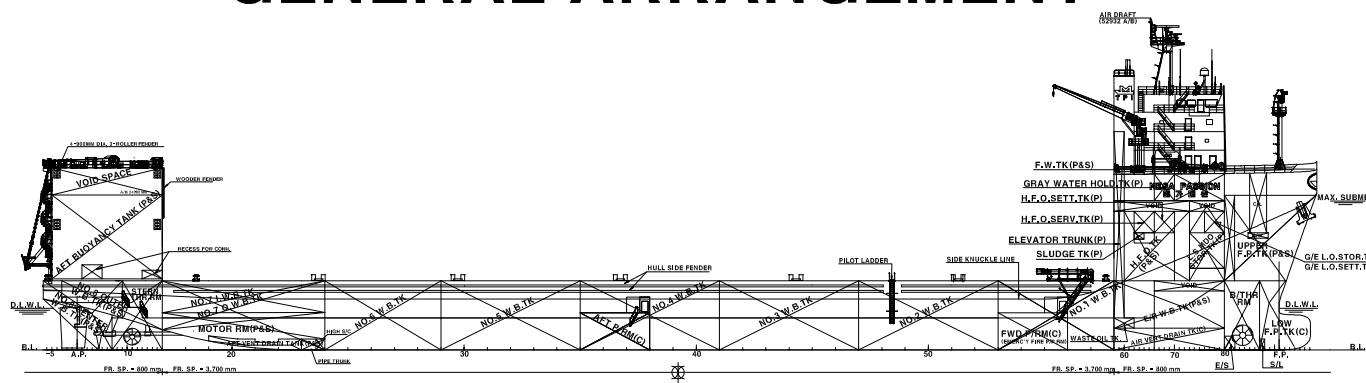


GENERAL ARRANGEMENT



PLAN HISTORY						
DATE	REV.	DESCRIPTION	DRN.	CHKD.	CHEF.	APPR.
12.02.20	A	PREPARED BY INTEGRATED DESIGN TEAM	J.C.LEE	J.A.HAR		
	B	REVISED THE ACCORDING TO THE MACHINERY ARRANGEMENT	J.C.LEE	J.A.HAR		
	C	MODIFIED THE BOUNDARY OF HFO HOLD	J.C.LEE	J.A.HAR		
	D	ADDED M.D.O. STOR. TK / L.E.M.D. STOR. TK / SERV. TK	J.C.LEE	J.A.HAR		
	E	ADDED GRAY WATER HOLD TK	J.C.LEE	J.A.HAR		
13.03.20	A	REVISED THE TANK BOUNDARY & NAME ACCORDING TO THE MACHINERY ARRANGEMENT	J.C.LEE	J.A.HAR		
	B	MODIFIED THE TANK BOUNDARY & NAME ACCORDING TO THE MACHINERY ARRANGEMENT	J.C.LEE	J.A.HAR		
	C	ADDED M.D.O. SERV. TK, M.D.O. SERV. TRNK, L.E.M.D. STOR. TK (IP), M.D.O. STOR. TK (S)	J.C.LEE	J.A.HAR		

PRINCIPAL DIMENSIONS		
LENGTH	O. A.	203.0 M
LENGTH	B. P.	191.6 M
BREADTH	MLD	63.0 M
DEPTH	MLD (MAIN DECK)	11.0 M
	MLD (UPPER DECK)	28.0 M
DRAFT	DESIGN	8.6 M
DRAFT	MAX. SUBMERGED	23.7 M
SERVICE SPEED		12.5 Knots
MAIN GENERATOR ENGINE		
TYPE : HMMSEN 6H32/40		
MCR : 3,000kw X 120 RPM (4SETS)		
ELECTRIC PROPULSION MOTOR		
TYPE AND NUMBER : ELECTRIC MOTOR X 2SETS		
RATING : 4,000kw X 120 RPM (EACH)		
CLASSIFICATIONS		
• KRS1 - CARGO SHIP, Semi-submersible at sinking condition, Sea Trust (DSA1, HCM), IWS		
ENV (IAS, IOPP, ISPP, IGPP, IAPP, IEE), CHA, LI		
• KRS1 - UMA, DPS (O)		

PROJ. NO.	1702(MED)	PROJECT	TP1 53,000 TOW HEAVY LIFT CARRIER
APPD BY	DSEC	TITLE	GENERAL ARRANGEMENT
CHKD BY	J.C.LEE	SCALE	1:100
DRN BY	J.C.LEE	DATE	1702041012009