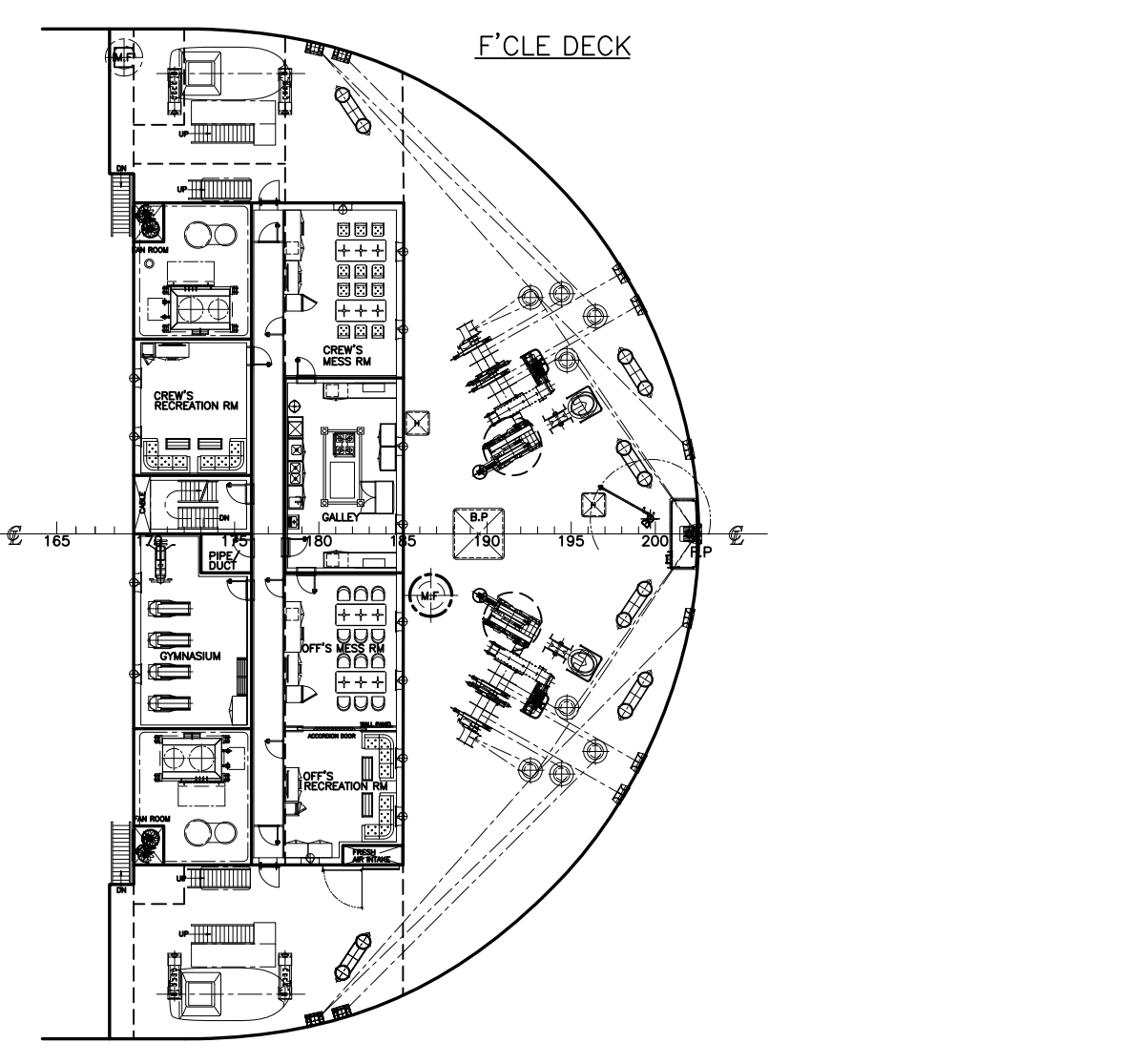
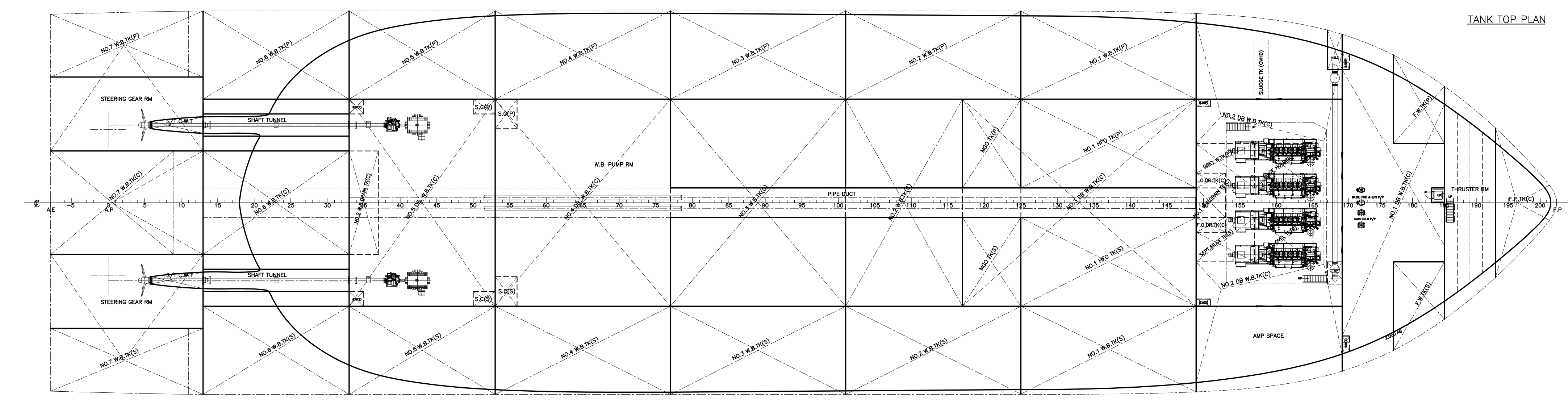
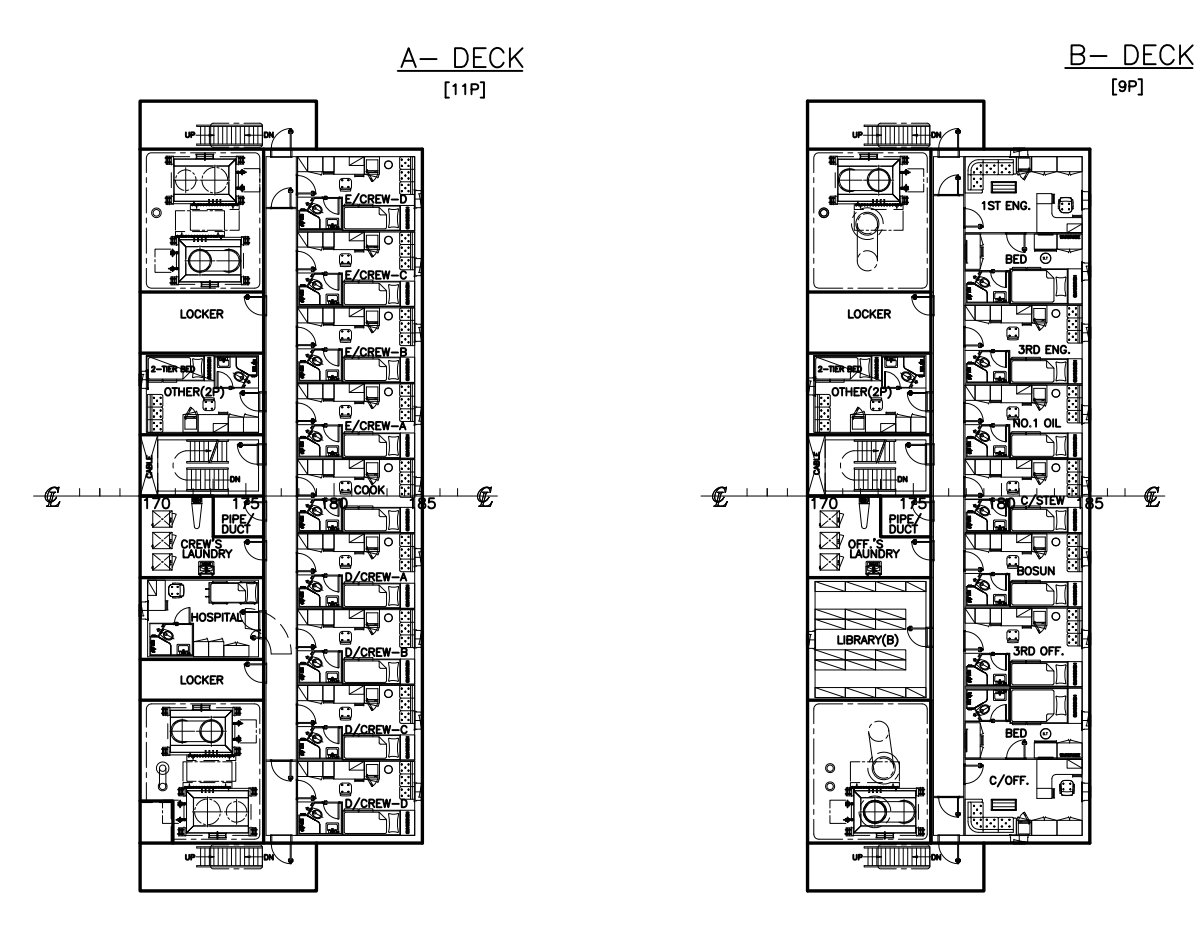
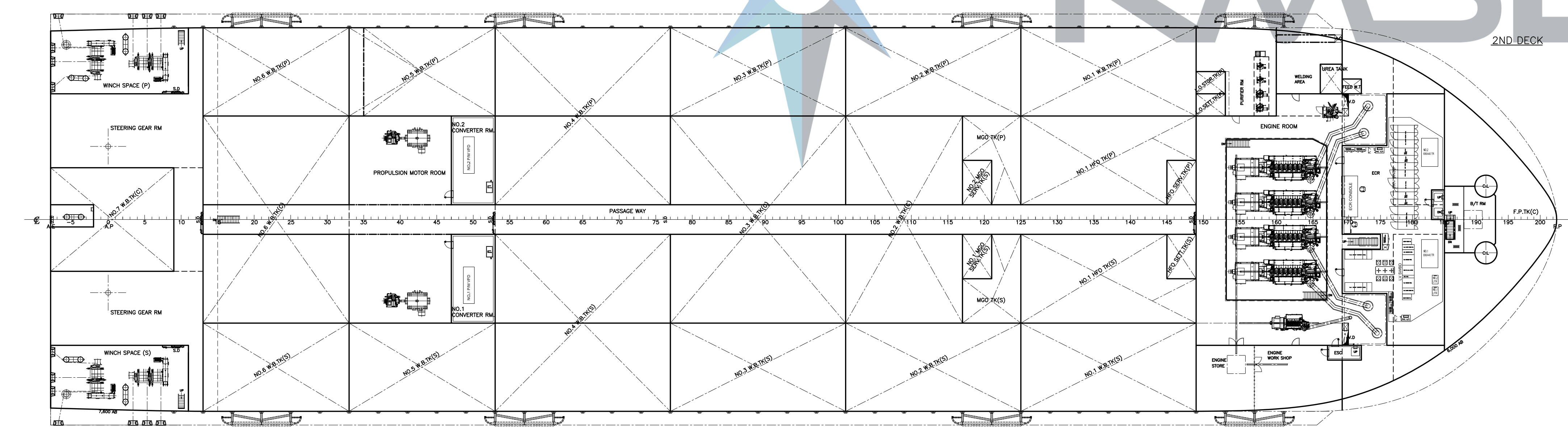
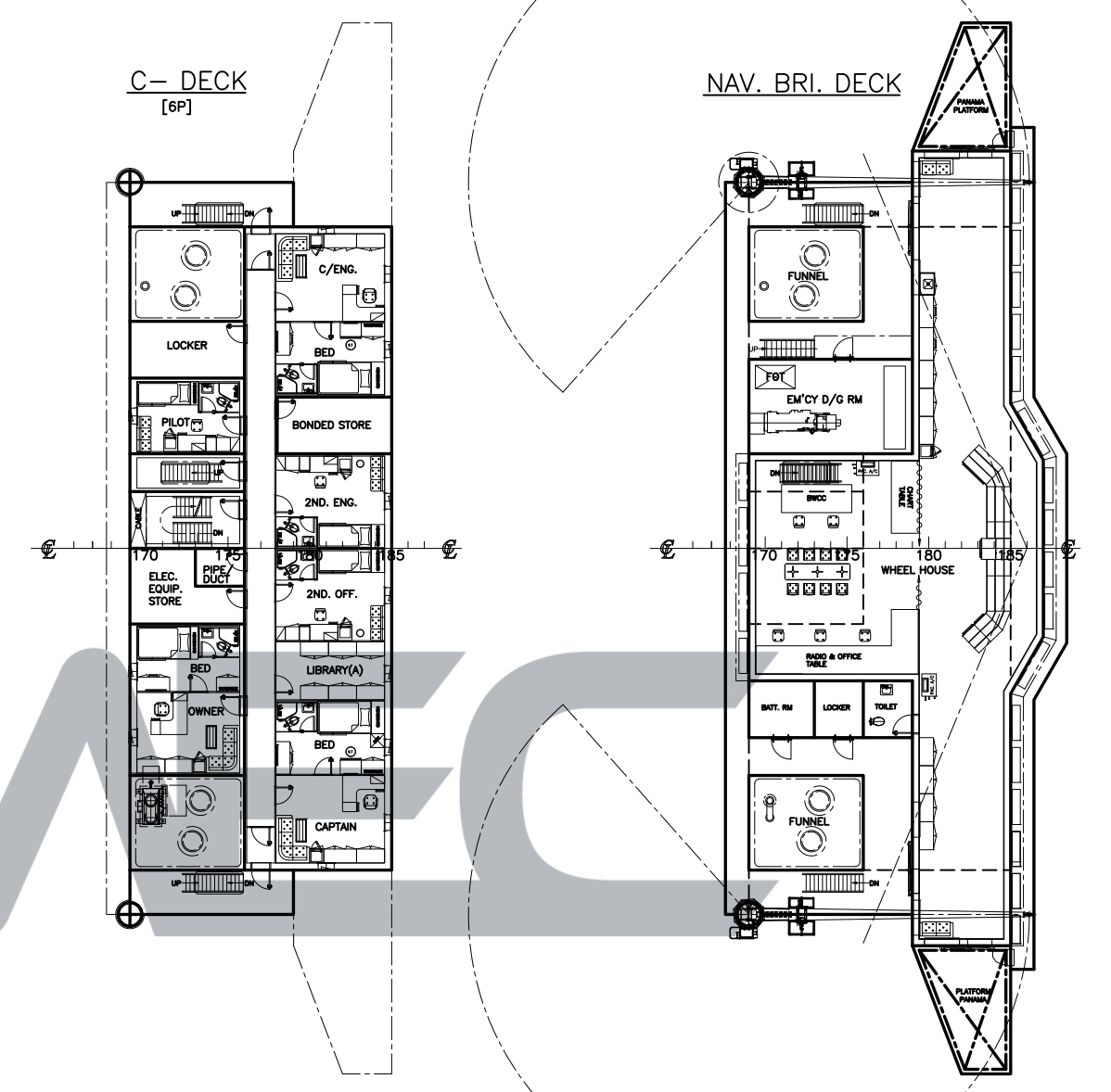
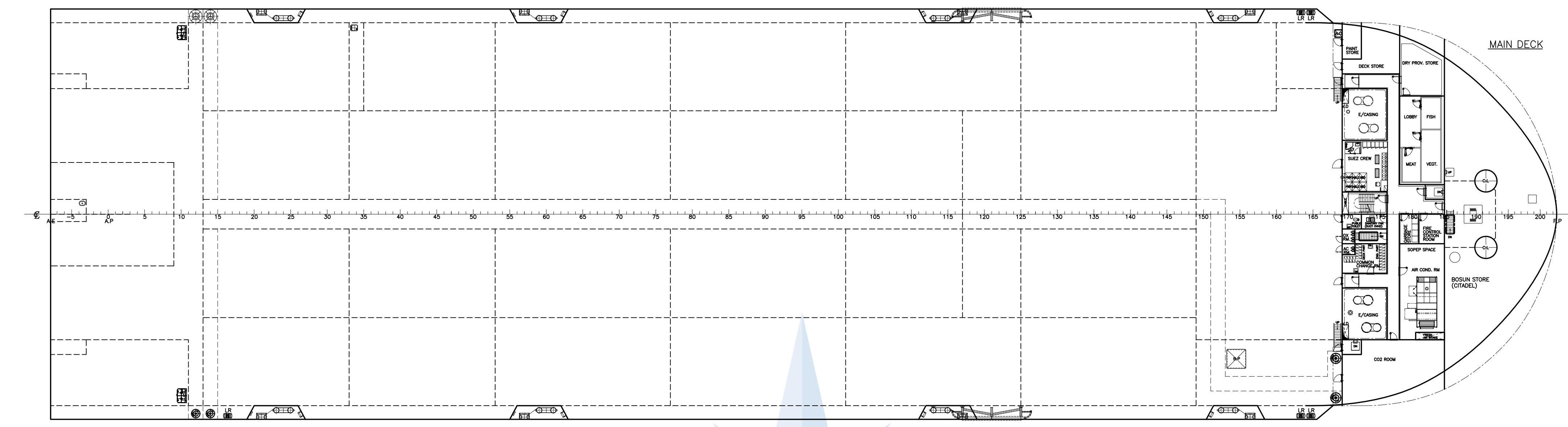
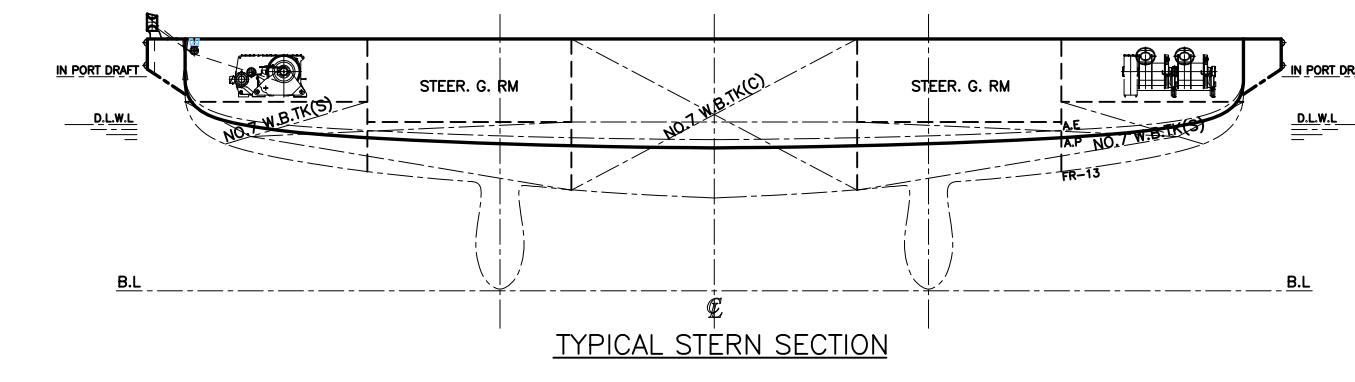
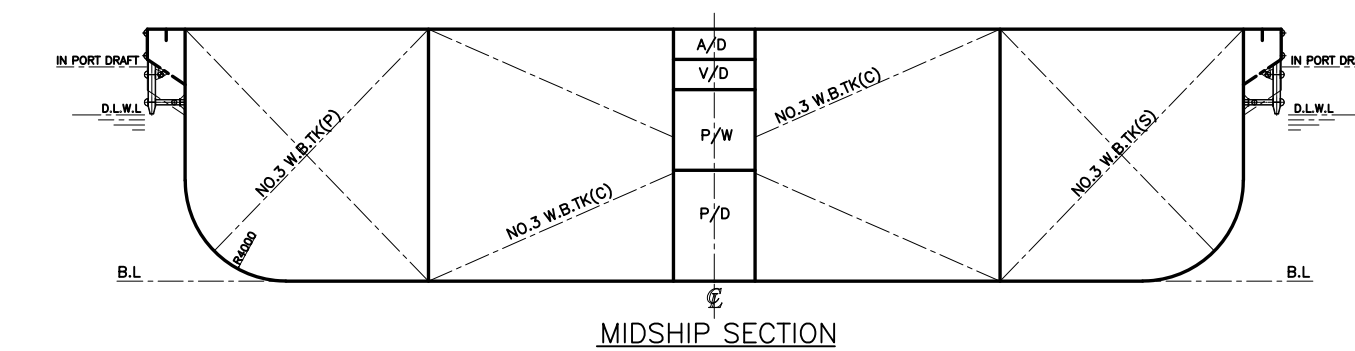
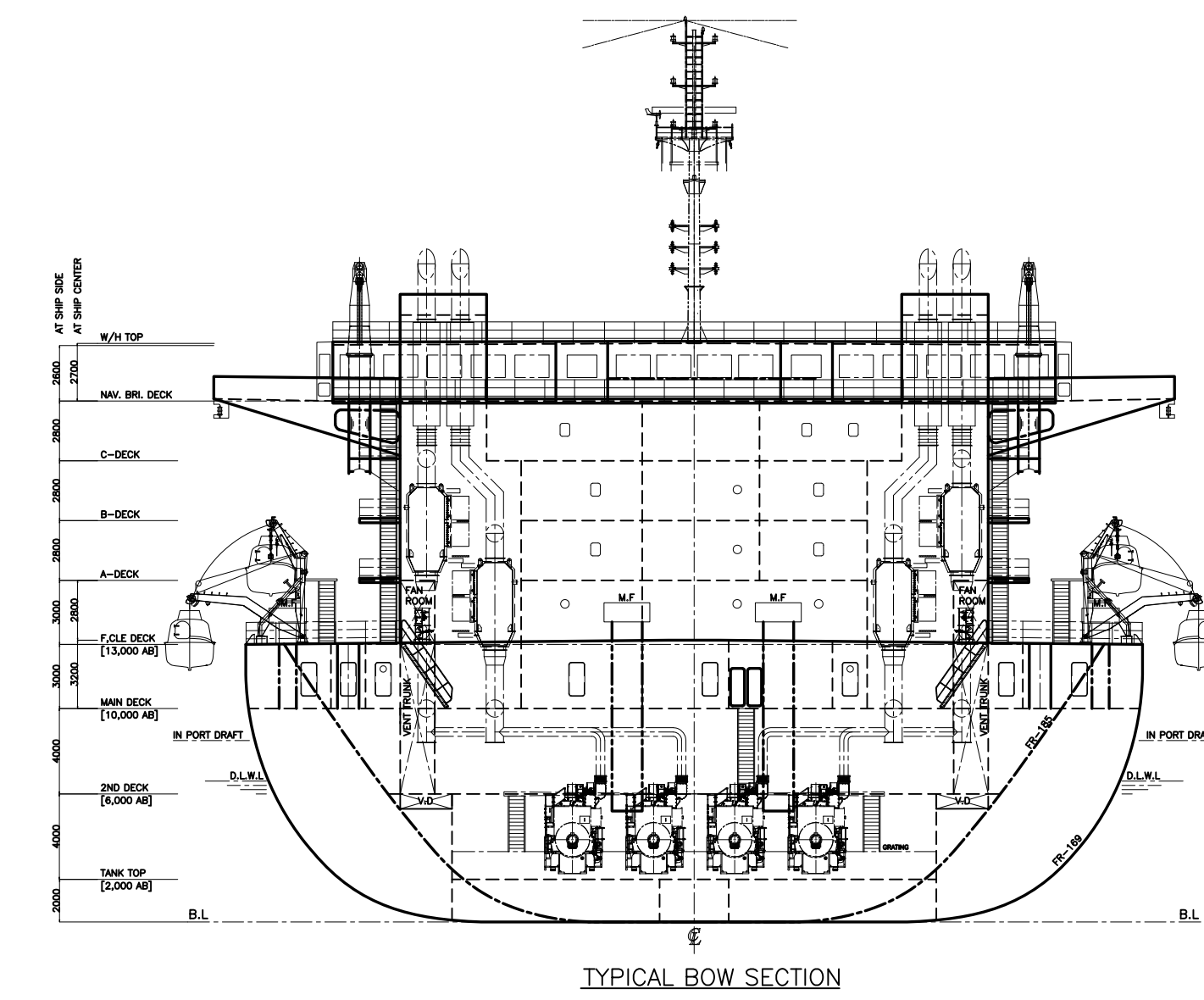
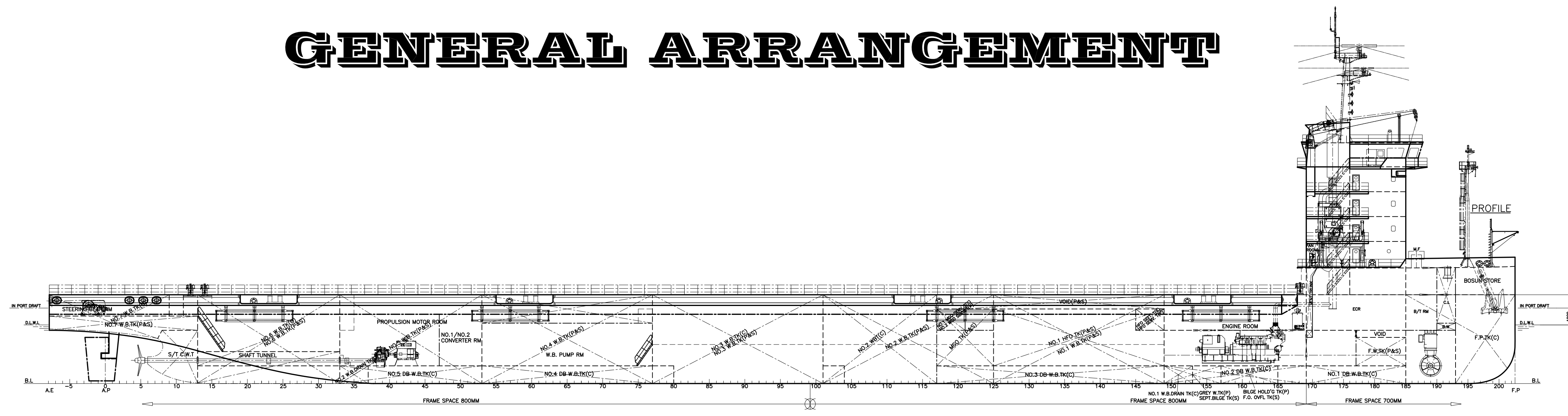


GENERAL ARRANGEMENT

PLAN HISTORY				
DATE	REV. NO.	DESCRIPTION	REMARK	
2024.06.28	△	PREPARED BY BASIC DESIGN TEAM.		



PRINCIPAL PARTICULARS

LENGTH (O. A.)	ABT. 165.00 M
LENGTH (B. P.)	158.70 M
BREADTH (MAX. WITH SPONSON)	45.00 M
BREADTH (M.L.D.)	42.00 M
DEPTH (M.L.D.)	10.00 M
DRAFT (M.L.D.) D.L.W.L	6.60 M
MAX. DRAFT IN PORT	8.50 M
DEADWEIGHT (@ S.L.W.L.)	ABT. 22,745 MT
CARGO DECK	140 M x 42 M
MAIN D/G	2,880 KW x 4
PROPULSION MOTOR	ABT. 3,800 KW x 2
SERVICE SPEED (6.6m DRAFT, 90% MCR, 15% S.M)	11.60 KTS
BOW THRUSTER	1,100 KW x 1
COMPLEMENT	26 PERSONS
HFOT INCL. SERV./SETT. TK	Abt. 2,200 M ³
MGOT INCL. SERV. TK	Abt. 700 M ³
FWT	Abt. 270 M ³

For and on behalf of the Buyer For and on behalf of the Builder

HMT MEGALINE CO.,LTD PANJIN DAJIN HEAVY OFFSHORE ENGINEER CO.,LTD

This drawing or document is the property of KMSEMEC and must not be partially or wholly copied and used for any other purpose without prior written permission of KMSEMEC.				
OWNER	PROJ. NAME	23K DWT HEAVY CARGO CARRIER		
APP BY	TITLE	GENERAL ARRANGEMENT		
APP BY	J. O. LEE			
CHK BY	Y. H. LEE			
DWN BY	D. H. KWAK			
PROJ. NO.	DATE	SCALE	DWG. NO.	REV. NO.
GC2418	2024.06.28	1/300	GA02	△
BUILDER				
DESIGNER	* (주)한국선박기술 KMSEMEC CO., LTD.			