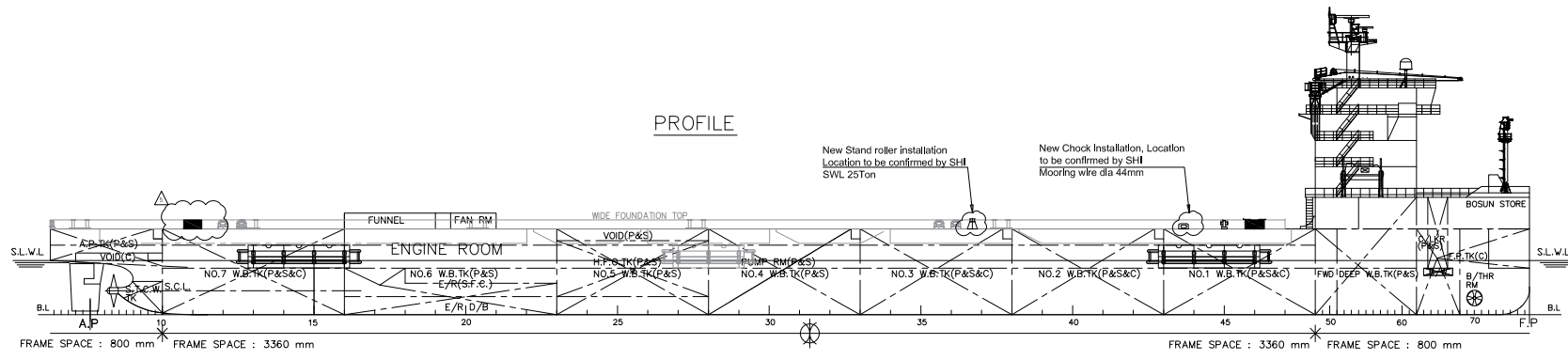


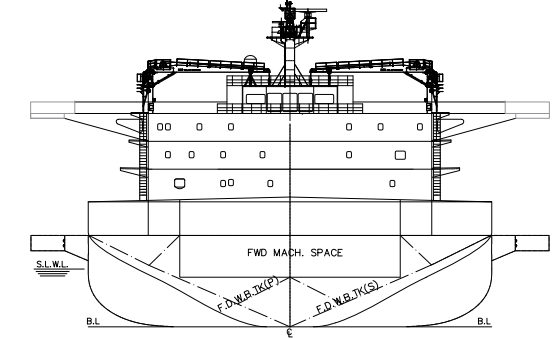
# GENERAL ARRANGEMENT MEGA-CARAVAN (RENOVATION)

PLAN HISTORY					
REV.	DATE	DESCRIPTION	DWN	CHK	APP
1	2018.02.28	- WIDE FOUNDATION 1M 신설 - SPONSON 양현 3.5M 연장 - STEEL FENDER STRUCTURE PIPE 양현 3.5m 연장 - WING BRIDGE 양현 3.5m 연장 - BOLLARD & CHOCK 이동 - MID 구역 CHOCK & WINCH 신설	S.J Yang	-	J.S.PARK
2	2018.03.05	- SPONSON OPENING ZONE 추가.	S.J Yang	-	J.S.PARK
3	2018.03.27	- SPONSON OPENING ZONE 변경 - ACCOM. LADDER 위치 변경(to FWD) - SPONSON 0.4L 구간 5개소 단결	S.J Yang	-	J.S.PARK
4	2018.05.03	- SPONSON OPENING HOLE 추가	S.J Yang	-	J.S.PARK
5	2018.07.16	- ON DECK PUSHPAD ADDED - SINGLE BOLLARD ADDED - DOUBLE BOLLARD ADDED - STERN PUSHPAD RELOCATED	Sayeem	-	J.W. CHOI

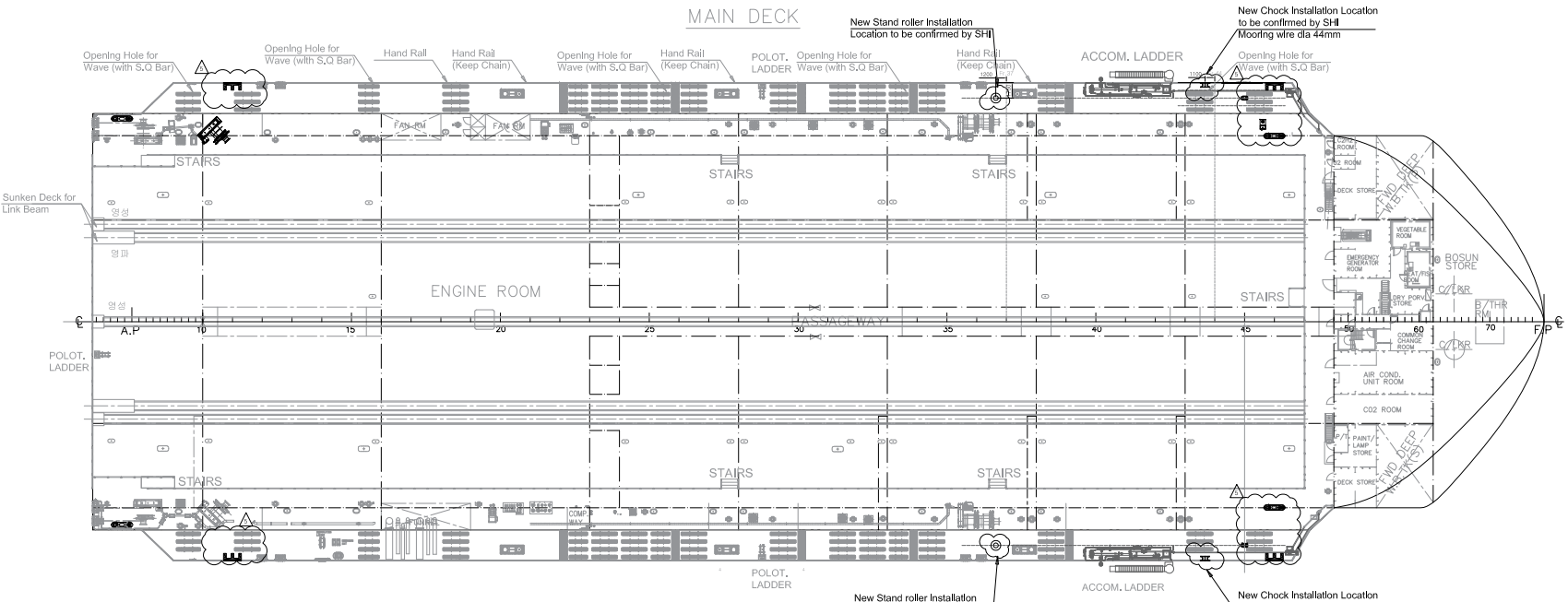
PROFILE



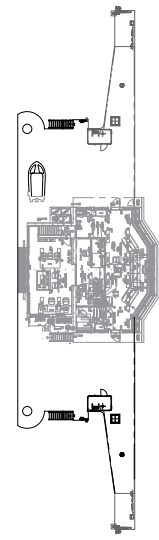
SECTION VIEW  
(FRAME 48)



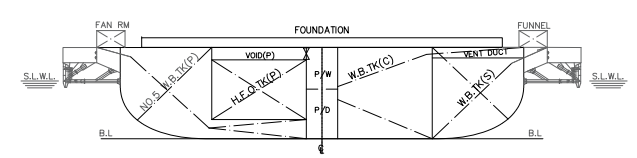
MAIN DECK



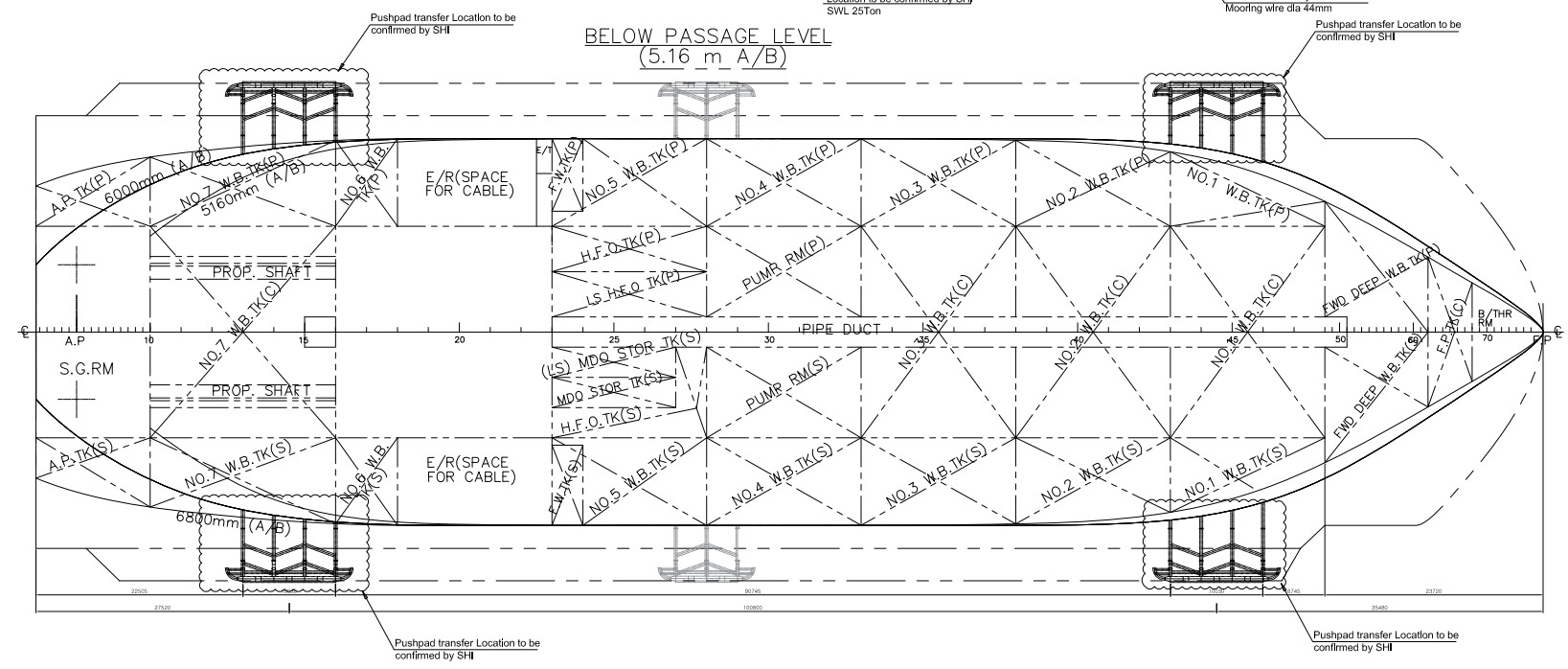
WING BRIDGE



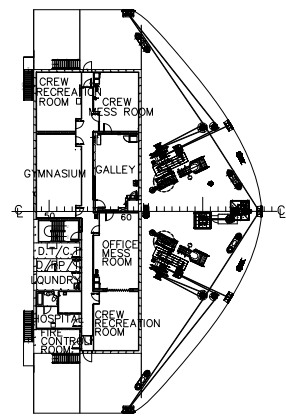
MIDSHIP SECTION



BELOW PASSAGE LEVEL  
(5.16 m A/B)



UPPER DECK



**PRINCIPAL DIMENSIONS**

LENGTH	O. A.	approx. 163.8	m
LENGTH	B. P.	159.4	m
BREADTH	MLD	42.0	m
MAX. BREADTH(WITH SPONSON)		54.0	m
DEPTH	MLD(MAIN DECK)	9.5	m
DRAFT	S.L.W.L	6.0	m
DRAFT	SCANTLING	8.5	m

**CLASSIFICATION**

KOREAN REGISTER  
 +KRS1 -CARGO SHIP, SEA TRUST (DSA, HCM), LI,  
 IWS, ENV(IAFS, IOPP, ISPP, IGPP, IAPP)  
 +KRM1 -UMA

IMO No. H.1704 : 9578608		PROJECT HMT 16,500 DWT Heavy Lift Carrier	
PROJECT NO. 1704	OWNER : MEGALINE	TITLE :	APPROVED : J.S.Park
DWG. No. : DA101Z029		<b>GENERAL ARRANGEMENT</b>	CHECKED : C.Y.LEE
SCALE : 1:350			DRAWN : S.J.Yang
DATE : 2018.07.16			TEL. : 055-731-1213
			REV. : 5