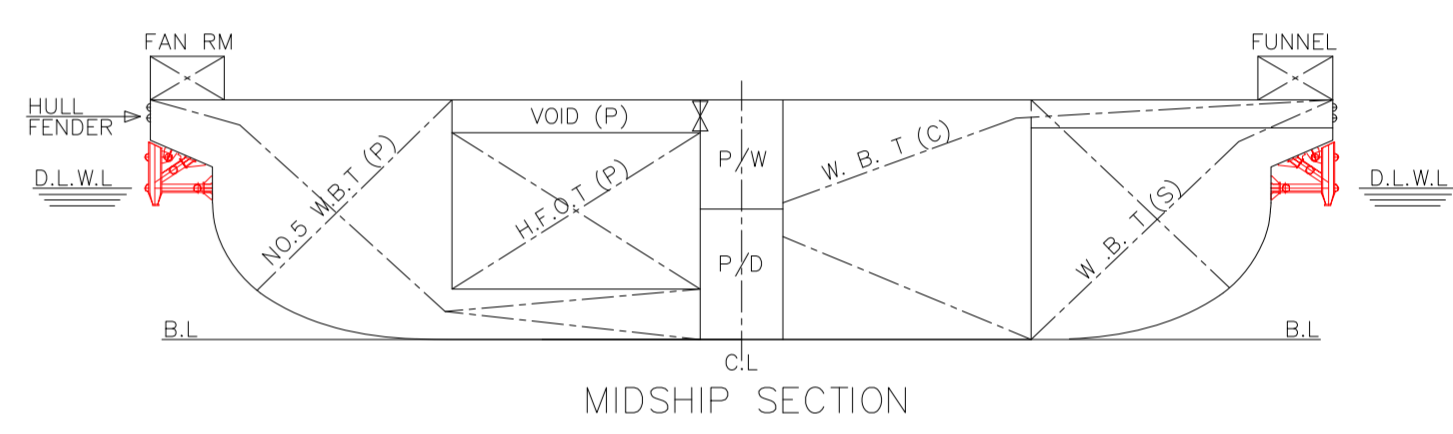
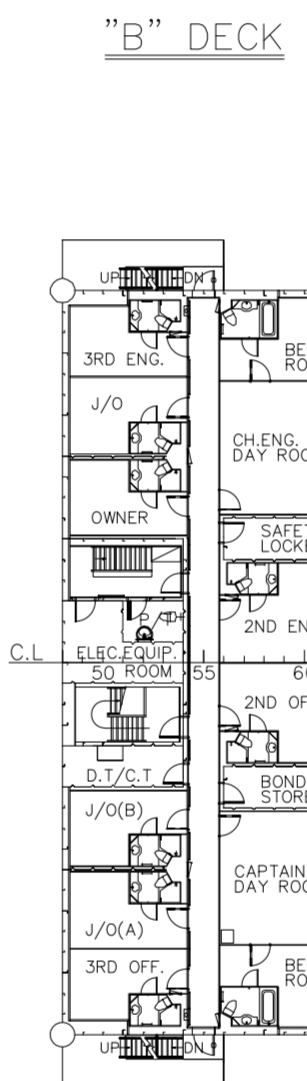
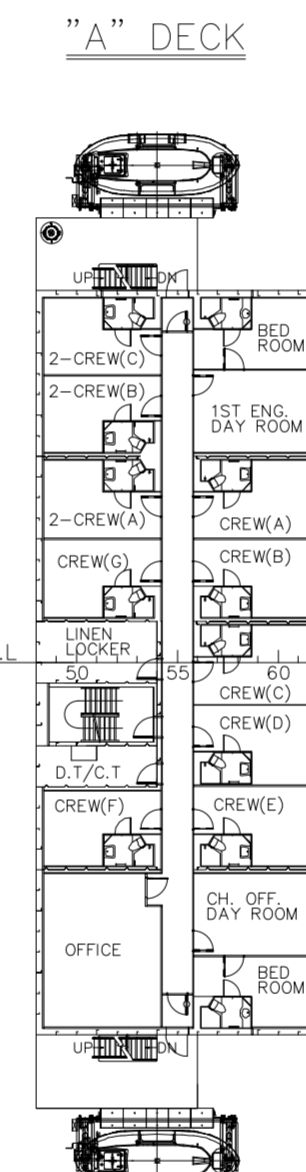
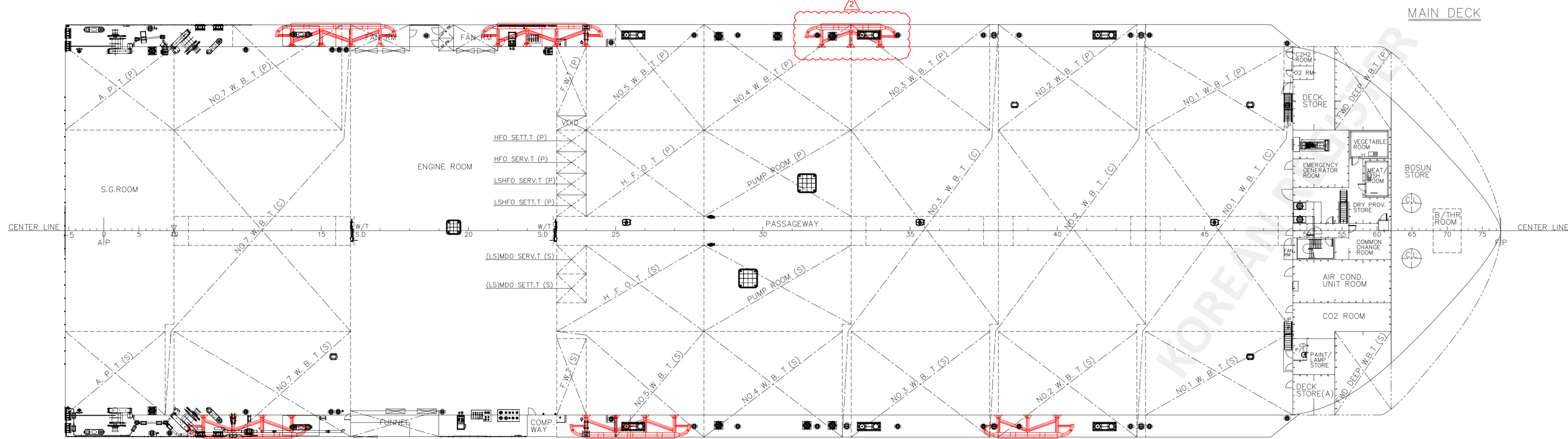
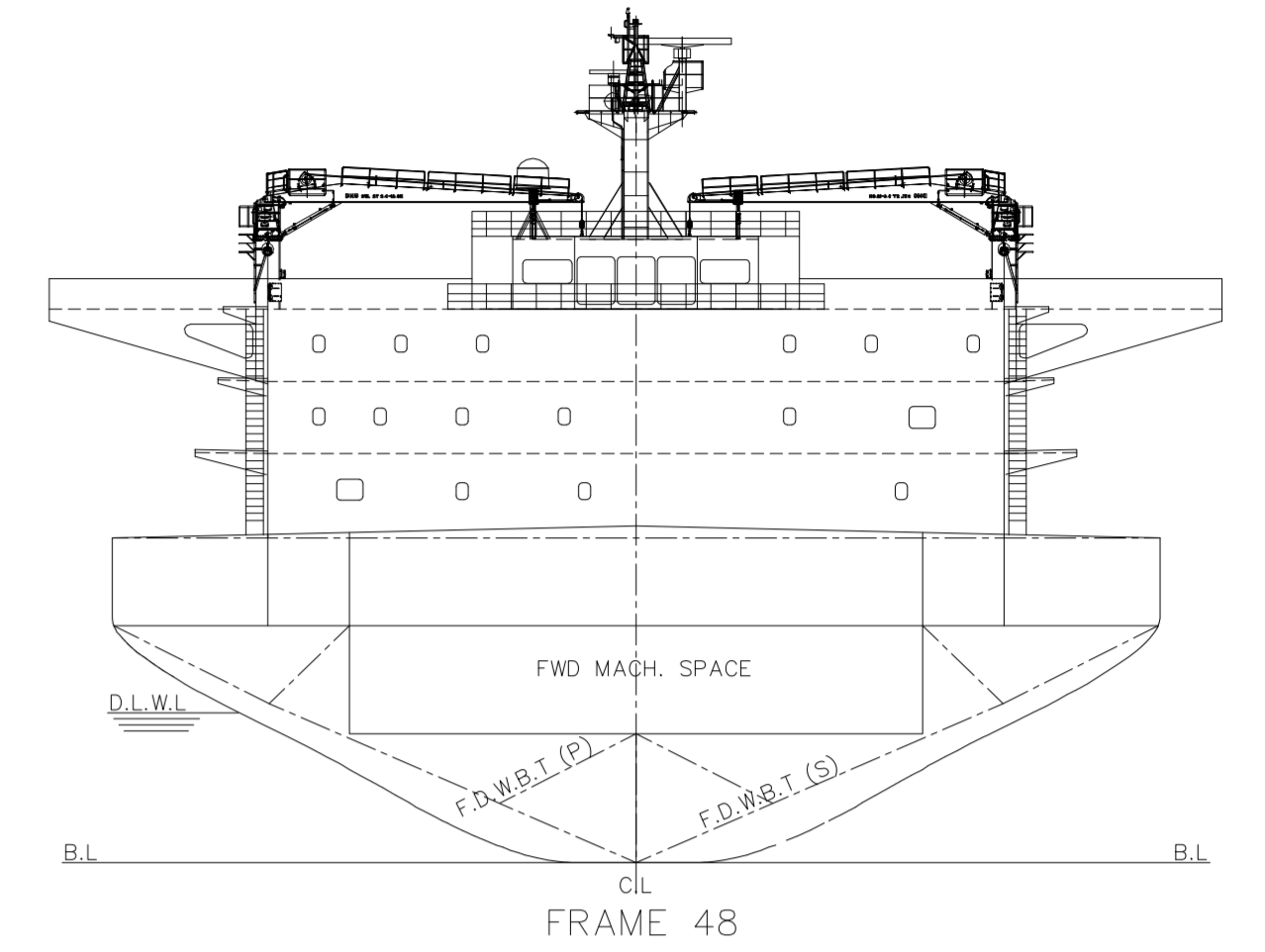
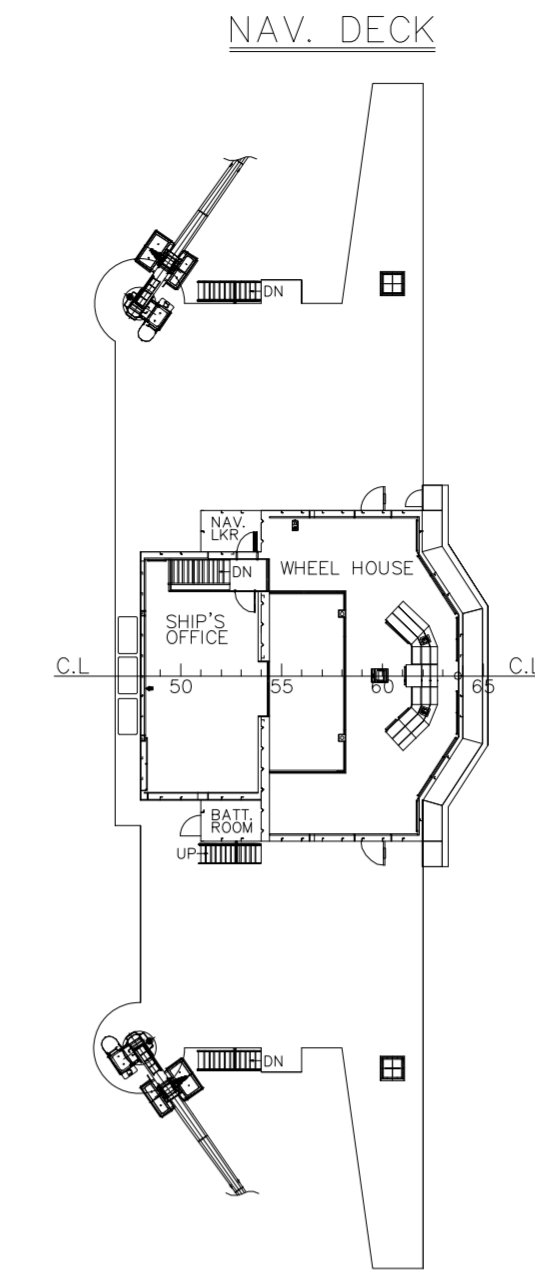
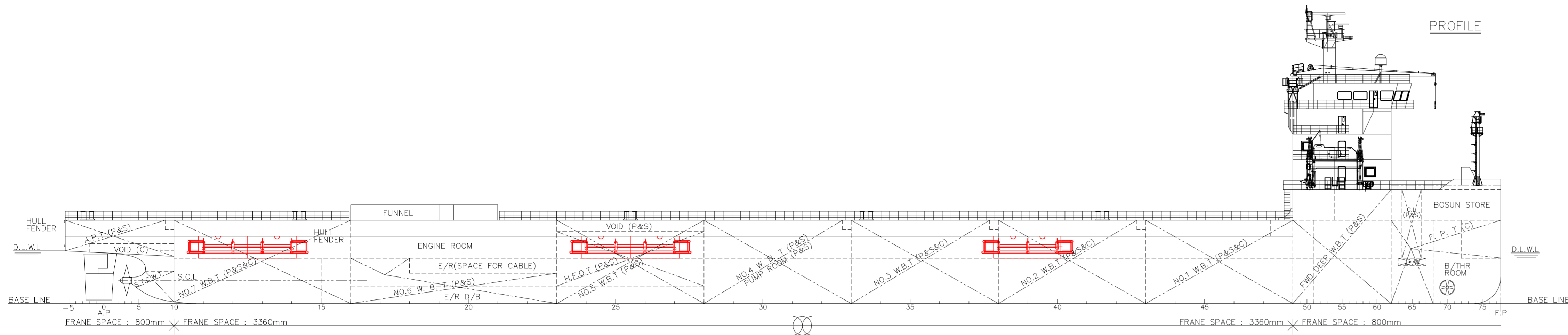


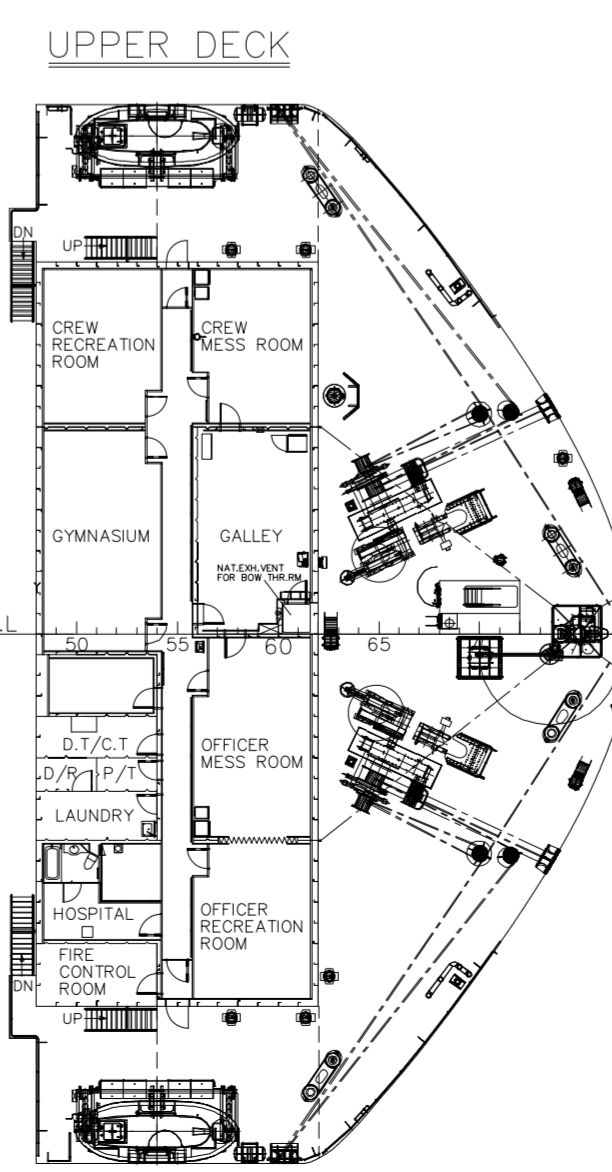
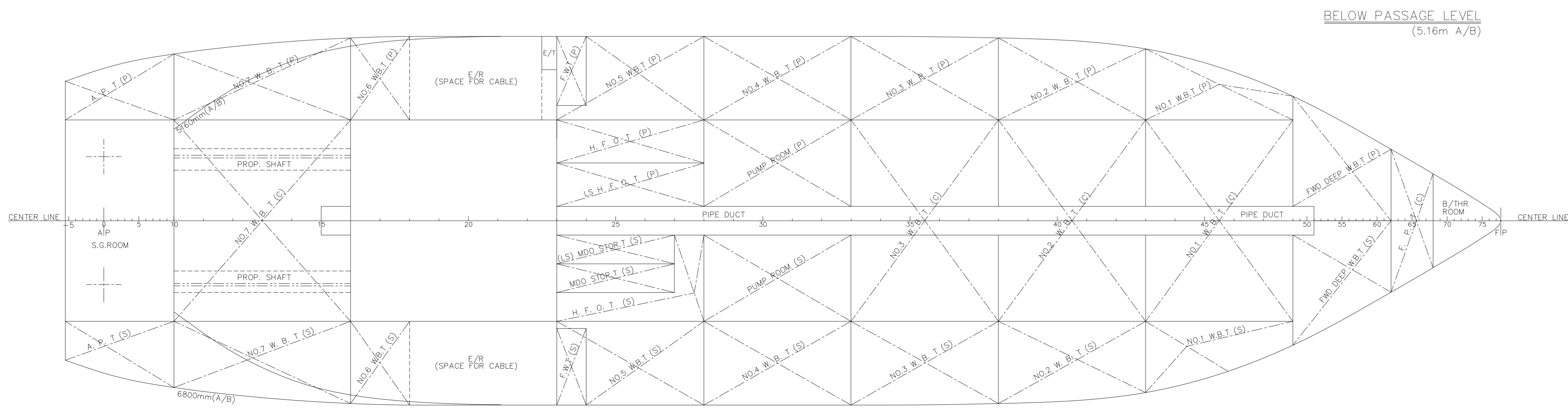
GENERAL ARRANGEMENT

PLAN HISTORY			
DATE	REV. NO.	DESCRIPTION	REMARK
2022.11.08	1	FOR APPROVAL	
2023.03.21	2	WORK BOAT 설치	
2024.08.	3	좌편 PUSH PAD 이동 설치 (FR.35-37에서 FR.32-34)	



PRINCIPAL DIMENSIONS

LENGTH	O.A	approx.	168 M 800
LENGTH	B.P		159 M 400
BREADTH	MLD		42 M 000
MAX. BREADTH (WITH SPONSON)			47 M 000
DEPTH	MLD(MAIN DECK)		9 M 500
	MLD(UPPER DECK)		13 M 000
DRAFT	(DESIGN, MLD)		6 M 000
DRAFT	(S.L.W.L., MLD)		6 M 000
DRAFT	(SCANTLING, MLD)		8 M 500



WITH COMMENTS

APPROVED

2024. 8. 13.

[KR INFORMATION]
 <I> The drawing has been reviewed and approved for the following modifications:
 - Position change of push pads

[KR COMMENT(C)]
 <C> The re-located push pad supports should be well aligned with the primary members of the hull structures.

WITH STATUTORY ASPECT ONLY
 Further details to be examined on relevant drawing(s)

도면승인 담당자 : 김성백
 Person in Charge : KIM Seungbaek

SHIP NAME : M/V "MEGA CARAVAN 2"

OWNER :	ITW MEGALINE CO., LTD.		HULL No.	H1705	
APP. BY :	W.S LEE	SUBJECT :	16,500 DWT HEAVY LIFT CARRIER	IMO No.	9566758
GENERAL ARRANGEMENT					
APP. BY :		SCALE :	1/300	DATE :	2024. 08.
CHK. BY :		DWG. NO. :	B-102	REV. NO. :	3
BUILDER :	DAEWOO SHIPBUILDING & MARINE ENG. CO., LTD.				
DESIGNER :	DAE YANG SHIP DESIGN				