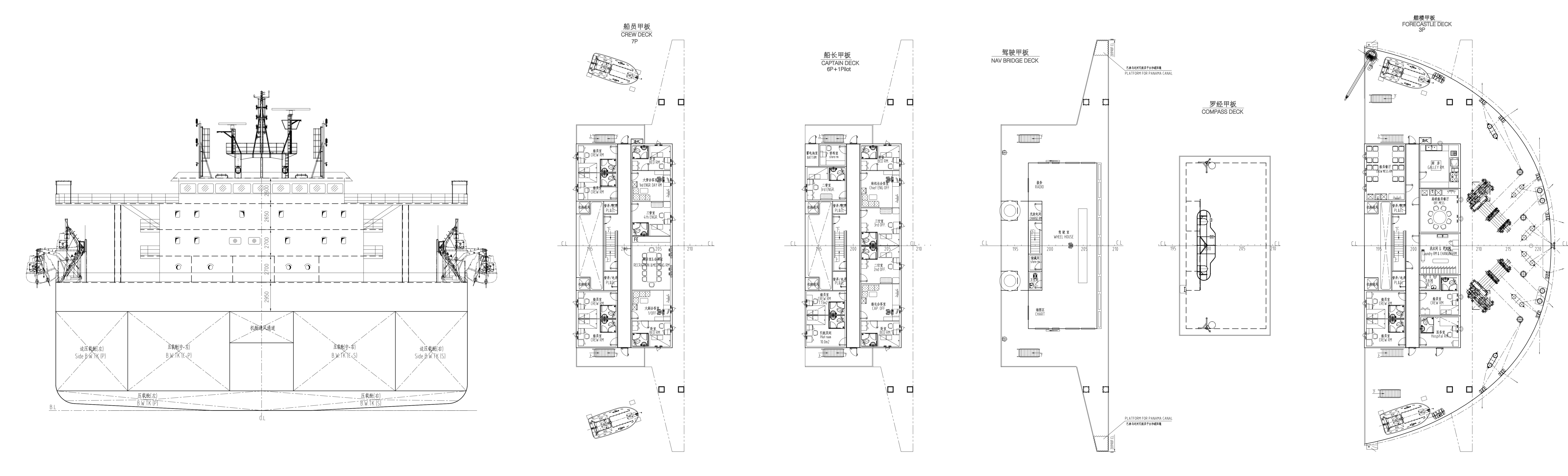
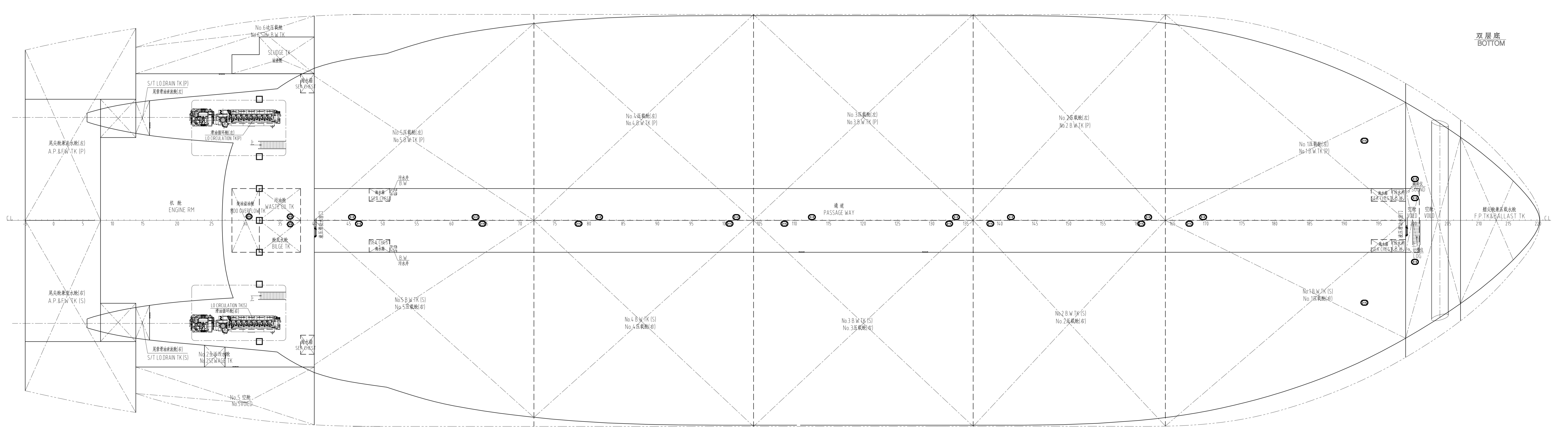
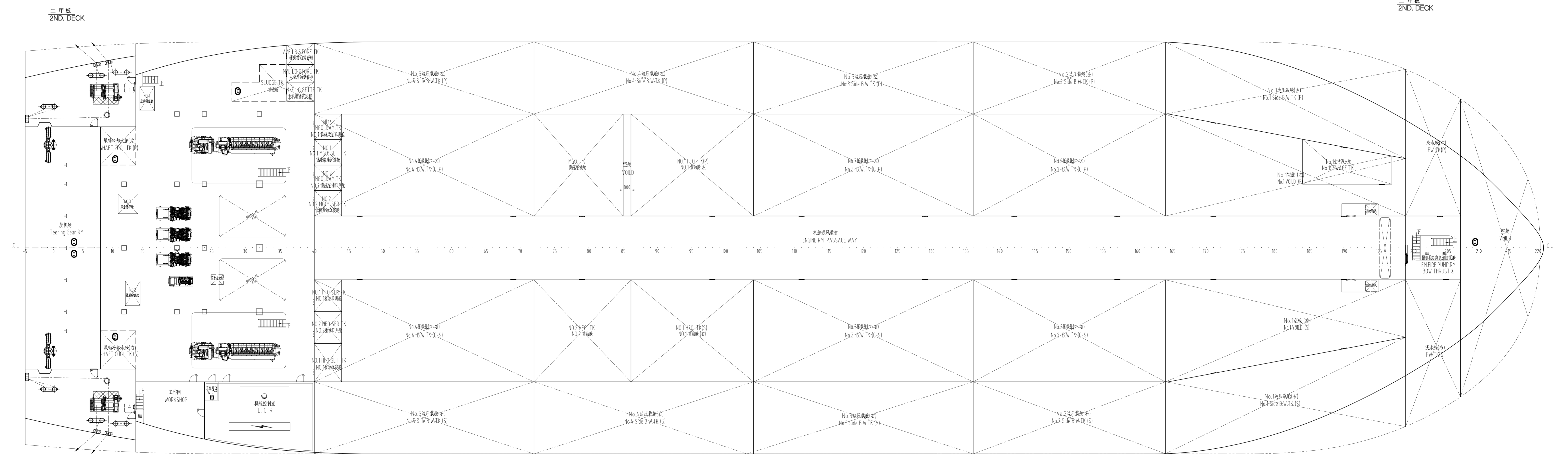
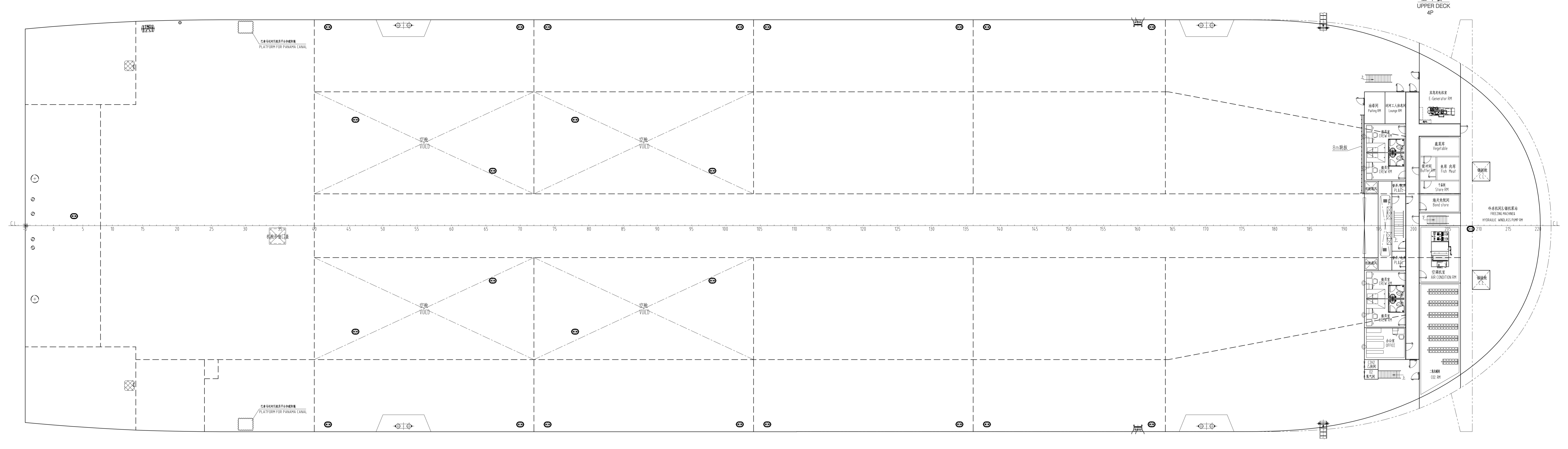
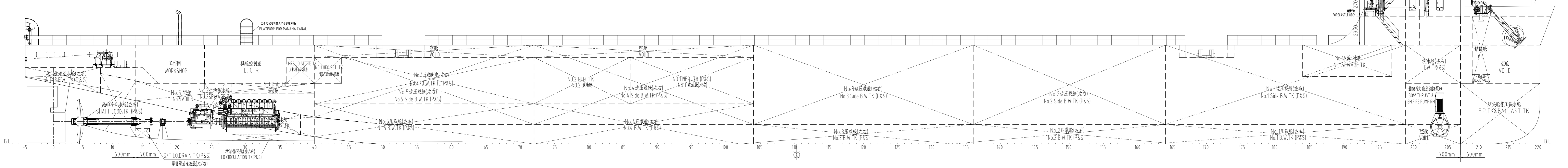


主要尺度及数据
PRINCIPAL DIMENSIONS

总长 LENGTH O.A.	156.00m	主机 MAIN ENGINE	8G32A MCR3906kw-600mp (2台)
垂线间长 LENGTH B.P.	151.60m	航速 SPEED (0.85MCR+15%SM @6.8m)	13.30kn
型宽 BREADTH M.L.D.	41.98m	船员定额 COMPLEMENT	20Persons + Pilot
型深 DEPTH M.L.D.	10.10m	船级 CLASSIFICATION	★ CSA Barge Carrier; Bridge Crane and Heavy Equipment Carrier; PSPC (B); Ice Class B; Loading Computer (S,I,D); In-Water Survey
设计吃水 DESIGNED DRAFT	6.80m	★ CSM BRC; PR-2; G-EP; G-ECO (BWM (T))	
航区 SERVICE REGION	无限航区 UNRESTRICTED NAVIGATION		
甲板负荷 DECK LOAD	22t/m ²		



福建海宏船舶工程设计有限公司
FUJIAN HAIHONG SHIP DESIGN CO., LTD.

项目负责人: CHANG WANG DONG FANG
CHANG WANG DONG FANG
Tel: +86-591-20251111
Fax: +86-591-87111000
Email: hsd@hahong.com

总布置图: General arrangement plan
比例: 1:100
图号: SD0485A-100-02

日期: 2024.10
审核: 陈海宏
设计: 陈海宏

福建海宏船舶工程设计有限公司
FUJIAN HAIHONG SHIP DESIGN CO., LTD.
2024.10